

# BÖLLHOFF

## **B-Blocker**

Efficient sealing of drill holes



## B-Blocker – High performance at low cost

### The function

The B-Blocker is a sealing and closure plug that enables you to close holes in pneumatic or hydraulic components effectively and for the long term. Thanks to its reliable seal, the area to be sealed remains tight for the entire lifetime of the system so that no medium can penetrate or leak. The conical design of the B-Blocker makes it ideal for use in cast components. It does not require any complex hole preparation and can often be pressed in directly. It is designed for application pressures of up to 35 bar. The one-piece design makes it particularly economical and easy to handle. Example applications include gearboxes, cooling systems and brake systems.

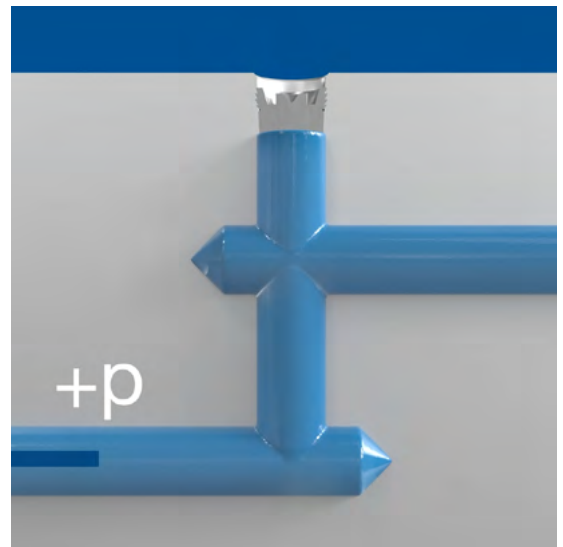
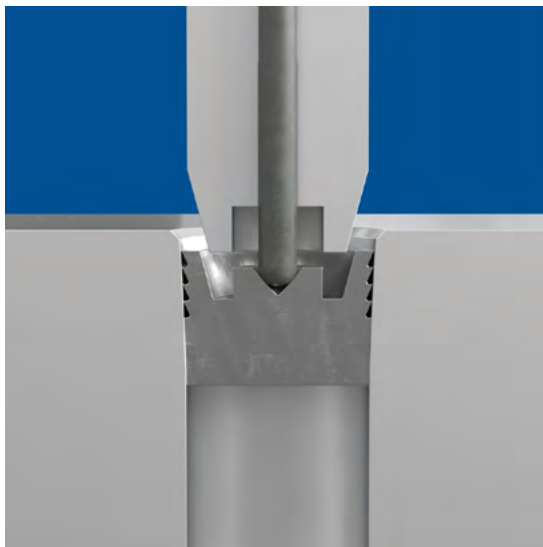


#### Your advantages at a glance

- Reliably tight due to optimum press fit
- High economic efficiency
- Fast installation
- Ideal for cast materials

### The processing

Cast materials have a conical geometry due to the necessary draft angles. The B-Blocker is perfectly matched to this geometry. It is processed using the press-fit principle. The B-Blocker is first prepositioned axially in the bore hole and then pressed radially. This is done in one installation step. No thread cutting or complex bore preparation is required. Processing is quick and easy using conventional presses. This saves time and costs and ensures the quality of the connection.

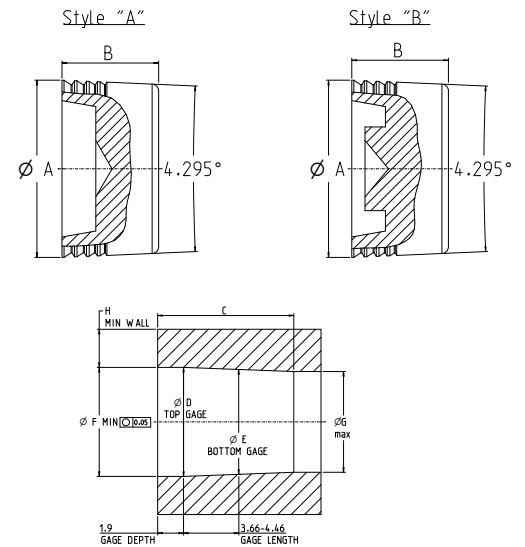
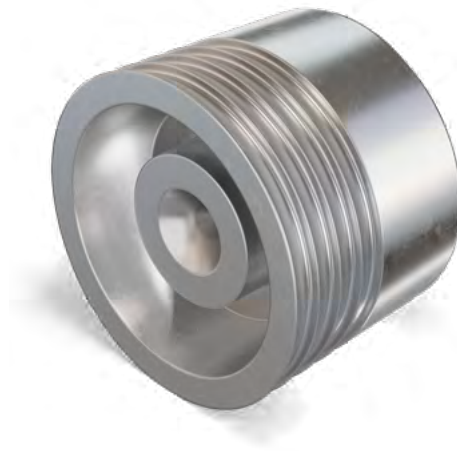


# B-Blocker – High performance at low cost

## B-Blocker

**Available in diameters from 4 mm to 16 mm**

- Pressure-fit principle
- Up to 35 bar operating pressure
- Material: Aluminum 6061



Ø A	Article number	Version	B in mm	Ø D in mm	Ø E in mm	Ø G in mm	Ø F in mm	H in mm	C in mm
4	ETBB040	A	4.98	4.01	3.69	3.40	4.16	2.10	10.00
5	ETBB050	A	4.98	5.01	4.69	4.40	5.16	2.10	10.00
6	ETBB060	A	5.64	6.01	5.69	5.40	6.16	2.10	10.00
7	ETBB070	B	5.64	7.01	6.69	6.40	7.16	2.45	10.00
8	ETBB080	B	5.64	8.01	7.69	7.40	8.16	2.80	10.00
9	ETBB090	B	7.10	9.01	8.69	8.38	9.16	3.15	12.00
11	ETBB110	B	7.10	11.03	10.71	10.39	11.18	3.85	12.00
13	ETBB130	B	7.10	13.03	12.71	12.40	13.18	4.55	12.00
16	ETBB160	B	7.10	16.03	15.71	15.39	16.18	5.25	12.00

## Hole preparation

The specification of the hole is shown in the table above. The B-blocker can be inserted directly into cast materials or into conical drilled holes. The hole should be free of grooves that could generate leakage.

If the surface structure is susceptible to leakage, the surface quality can be improved with a reamer. The corresponding tool article numbers can be found in the table below.

Ø A in mm	Article number Element	Article number Tool	Article number Reamer
4	ETBB040	ETBBIT040	ETBBCT040
5	ETBB050	ETBBIT050	ETBBCT050
6	ETBB060	ETBBIT060	ETBBCT060
7	ETBB070	ETBBIT070	ETBBCT070
8	ETBB080	ETBBIT080	ETBBCT080
9	ETBB090	ETBBIT090	ETBBCT090
11	ETBB110	ETBBIT110	ETBBCT110
13	ETBB130	ETBBIT130	ETBBCT130
16	ETBB160	ETBBIT160	ETBBCT160

Let us convince you.



Passion for successful joining.

**Böllhoff Group**

Competence leader in 360° Joining Technology

Find your local partner at [www.boellhoff.com](http://www.boellhoff.com) or contact us at [message@boellhoff.com](mailto:message@boellhoff.com).