

BÖLLHOFF

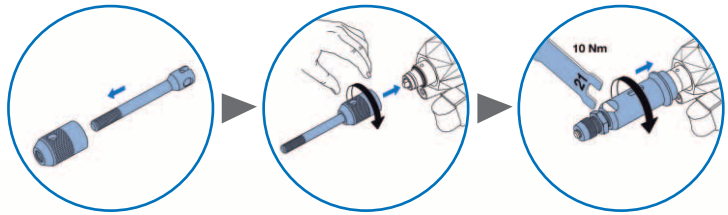
RIVKLE® NEO P107

The new generation of RIVKLE® pneumatic tools



RIVKLE® NEO P107 – Hydraulic/pneumatic setting tool for RIVKLE® blind rivet nuts and studs**Quick replacement of tooling**

- Use of existing mandrels and anvils
- Easier tool replacement

**Force adjustment**

- No more untimely misadjustment
- Greater accuracy

Ergonomics consistent with Böllhoff standards

- Redesigned trigger (no pinching)
- Comfortable and ergonomic handle

Your advantages

3 kN to 18 kN (M3-M8 steel)



36 RIVKLE® / min (record)



Optimised maintenance (easier and faster)



Designed and validated for large series use



Compatible with existing RIVKLE® tools (mandrels and anvils)



For RIVKLE® blind rivet nuts and studs



RIVKLE® NEO P107 – Hydraulic/pneumatic setting tool for RIVKLE® blind rivet nuts and studs**Central air connection**

- Suited to right-hand and left-hand use

Maintenance videos
Tool videos

**Air-operated return**

- Redesigned to improve speed

Developed and produced
in France



RIVKLE® NEO P107 – Hydraulic/pneumatic setting tool for RIVKLE® blind rivet nuts and studs



Designed for use in medium and large series productions

- Multi-dimensional hydraulic/pneumatic setting tool for RIVKLE® blind rivet nuts and studs
- The fastest tool in the Böllhoff range

Böllhoff-specific operation

- Force setting: one adjustment per RIVKLE® diameter
- The RIVKLE® is screwed in by simple pressure on the mandrel
- Unscrewing is automatically triggered when the setting force is reached

Optimised ergonomics

- Redesigned trigger
- Suitable grip
- Centralised air connection
- Easier and more accurate adjustment

Maximum stroke	7.0 mm
Maximum setting force	18 kN (from M3 to M8 steel)
Operating air pressure	5.5 bar min to 6.5 max
Weight without tooling	2.0 kg
Noise level	< 70 dB (A)
Production speed	36 RIVKLE® /min

	Ø RIVKLE®				
	M3	M4	M5	M6	M8
Steel	■	■	■	■	■
Stainless steel	■	■	■	■	
Aluminium	■	■	■	■	■

 236 172 01000



RIVKLE® NEO P107 – Tooling and accessories

Content of the case



User manual



Quick start



Device purging kit



Open-end wrench



Allen wrench

236 172 01 000

Tooling

				Ø RIVKLE®				
				M3	M4	M5	M6	M8
Mandrel			236 113 XX 020	03	04	05	06	08
			376 113 XX 020	–	04	05	06	08
Anvil			236 113 XX 030	03	04	05	06	08
			376 113 XX 030	–	04	05	06	08

Accessories



Force indicator with calibration certificate

282 522 14 800



Force locking kit

236 999 00 057



Tool holder

236 500 00 019



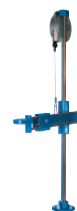
Vertical kit

236 500 00 014



Balancer

282 590 10 820



Articulated arm

282 590 10 664



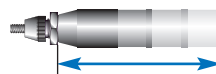
Articulated arm

282 590 10 665

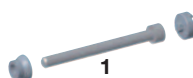


FRL kit

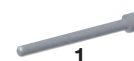
236 599 00 036



	Extension kit 55 mm	282 500 00 018
	Extension kit 110 mm	282 500 00 017
	Extension kit 165 mm	282 500 00 016



1



1

	RIVKLE® NEO P107 Hex socket screw kit	Screw, standard ISO 4762 DIN 912
M3	236 500 00 001	M3 x 60 : 236 803 03 020
M4	236 500 00 002	M4 x 60 : 236 803 04 020
M5	236 500 00 003	M5 x 65 : 236 803 05 020
M6	236 500 00 004	M6 x 65 : 236 803 06 020
M8	236 500 00 005	M8 x 70 : 236 803 08 020

BÖLLHOFF

Passion for successful joining.



Böllhoff Group

Innovative partner for joining technology with assembly and logistics solutions.

Consult the contact details for our sites worldwide on www.boellhoff.com.